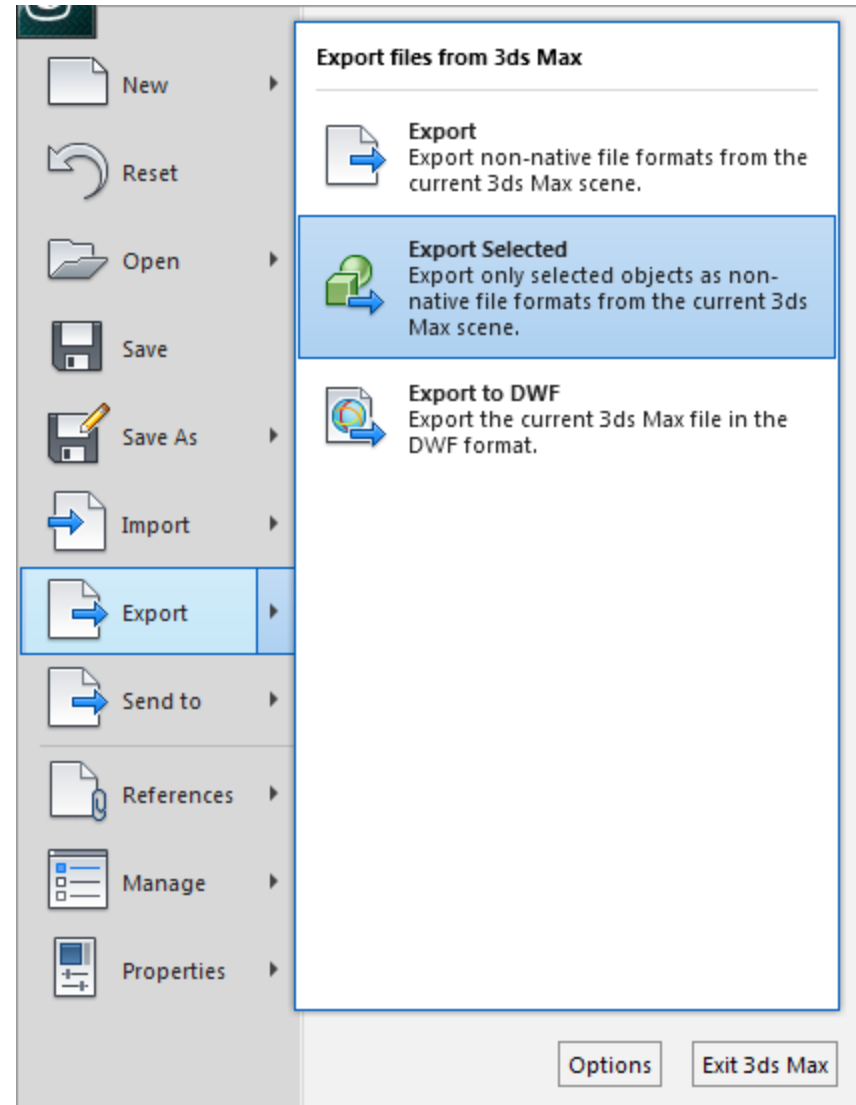
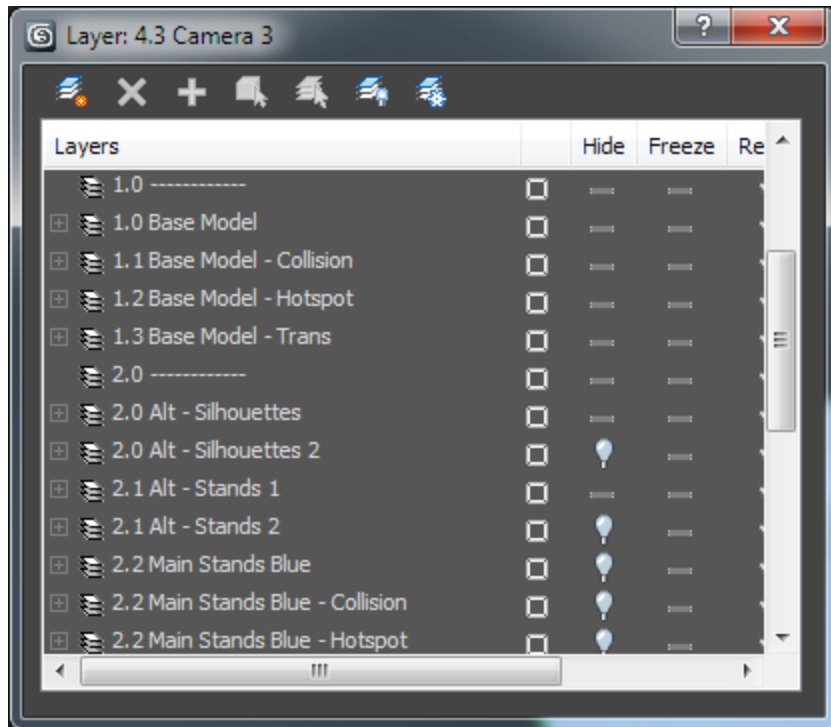


Architecture Interactive: Alternates

Setting up alternates is a great way to demonstrate variations in design. Each variation is saved out to a separate file. If you keep all your alternates in one file, you'll need to use Export Selected instead of the standard export function. Some people find it useful to separate them by layers.

Saving out Alternates With Export Selected

1. Select the geometry for your alternate.
2. Go to File -> Export -> Export Selected
3. Export in OpenSceneGraph format to the desired subfolder of your alternates folder



Notes

- For small projects you might keep all your alternates in one max file sorted by layer
- In larger projects, you may want to incorporate containers or xrefs instead.